



باراري
B A R A R I
 WILDLIFE - FORESTRY - MANAGEMENT



2024

009-P-EYE-BLC_KSA_VISION-C

TABLE OF CONTENTS

01

Who We Are

04

Portfolio

02

Our Holistic Approach

05

Certifications & HSE

03

Innovation

06

Our Commitment



موارد القابضة للإستثمار
MAWARID HOLDING INVESTMENT



WHO WE ARE

- + **Trusted Partner** of the UAE Government.
- + With over **10,000 employees**, the largest integrated wildlife and nature conservation operator in the Middle East and North Africa (MENA).
- + **A subsidiary** of International Holding Company (**IHC**), the US \$240 billion (SAR 900 billion) listed investment group.
- + **Decades of experience** in some of the toughest environments in the region.
- + Our **key clients** include Environment Agency Abu Dhabi, Royal Family Palaces, and all the major **UAE** Municipalities.
- + **Key clients in the Kingdom** of Saudi Arabia
 - The Royal Commission for AlUla
 - Sports Boulevard Center
 - Saudi Aramco
 - NCVG
 - Soudah Development Company
 - Hunting Reserve Development Company- PIF
 - NEOM

OUR COMMITMENTS

WE SUPPORT



UN Global Compact

UN Global Compact is a call to companies to align their strategies and operations to universal principles on human rights, labor, environment and anti-corruption, and take actions that advance societal goals.



Sustainable Development Goals

Commitment to the UN SDGS: Taking actions and contributing to the global goals.



وزارة التغير المناخي
والبيئة
MINISTRY OF CLIMATE CHANGE
& ENVIRONMENT

UAE Climate-Responsible

Mawarid Holding Investment, as a climate-conscious and responsible private sector company, has committed to the UAE's MOCCA strategic initiative.

WHO WE ARE - BARARI FACTS



180,000 MAINTAIN AND HARVEST PALM TREES



HUNTING RESERVE



500,000 HECTARES OF FORESTS WITH OVER **18 MILLION** TREES



4 ECO TOURISM RESORTS



2,700,000 SQM OF GREEN AREAS



OVER **2,200 KM** OF WIRE FENCES



• OVER **100,000 KM** OF IRRIGATION PIPELINES
• OVER **4,500** WELLS



PRODUCING **1 MILLION** MANGROVE PLANTS ANNUALLY



ORGANIC COMPOST PLANTS



NUMEROUS PRIVATE AND ORGANIC FARMS



BREEDING ARABIAN TAHR



4 LARGE NURSERIES WITH OVER **2 MILLION** SEEDLINGS PER YEAR



OVER **200,000** ANIMALS & WILD BIRDS



Note:
- MOM (Maintenance, Operations & Management)

WHO WE ARE: OUR PEOPLE



KASHIF SHAMSI
GROUP CHIEF EXECUTIVE OFFICER



DR GHULAM SARWAR
Country Manager



DR ANAS MOHAMED IDRIS
Research and Genetics



KHALED AWAD
Animal Feed



BRUCE PEDERSEN
Nurseries



Abdul Ahad
Procurement & Supply Chain



FAKHER ABED
Forestry and Wildlife



ELIE FARHAT
Hunting Reserves



OMRI ROTHMAN
Irrigation Technology



ALAA AL KHRAISHA
Soil Innovation



Nabeel Ehsan
Governance, Risk & Compliance



MARK RUPPERT
Architecture & Engineering



MICHEL ZEINATI
Health, Safety and Environment



NAJDI SOLAIMAN
Agriculture



MOSTAFA FAWZI
Construction



Adel Hassan
Fleet Management & Maintenance

FORESTRY AND WILDLIFE

CONSTRUCTION

INNOVATION



WHO WE ARE: FORESTRY AND AGRO ECOLOGICAL

- + Landscaping Services
- + Water Reservoirs and Resources
- + Irrigation
- + Habitat Restoration
- + Horticulture and Nurseries
- + Park Design and Construction
- + Relocation of Trees
- + Date Palm Management
- + Mangrove Management
- + Genetic Improvement
- + Pest Control
- + Invasive and Alien Species Control
- + Remote Sensing and GIS Repositories
- + Research and Development
- + Master Planning, Development, Construction and Operation



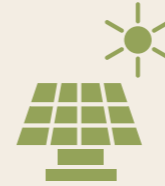
WHO WE ARE: WILDLIFE

- + Wildlife Breeding**
- + Animal Husbandry**
- + Game Capture**
- + Veterinary Care**
- + Conservation, Introduction, and Reintroduction of Wildlife**
- + Rehabilitation of Degraded Habitats**
- + Genetic Improvement**
- + Game Birds and their Breeding**
- + Pest Control**
- + Invasive Species Identification and Control**
- + Research and Development**
- + Faunal Surveys and Ecological Studies**
- + Master Planning, Development, Construction and Operation**

WHO WE ARE: COMMITMENT TO THE PLANET



RECYCLING
WASTE INTO PRODUCT



RENEWABLE ENERGY
RESOURCES



EXPAND FOOD SECURITY SOLUTIONS



50% REDUCTION IN
WATER CONSUMPTION



REVERSING
DESERTIFICATION



LABOR FREE
IRRIGATION



10 MILLION SEEDS IN OUR
SEED BANK



REDUCE CHEMICAL
FERTILIZER USAGE





موارد القابضة للإستثمار
MAWARID HOLDING INVESTMENT



موارد للخدمات
Mawarid Services



مختبر الإمارات للسلامة
EMIRATES SAFETY LABORATORY



مصنع العين للأعلاف
Al Ain Fodder Factory



شركة موارد للفنادق و الضيافة
Mawarid Hotels and Hospitality



شركة موارد الدولية للاستثمار
Mawarid International Development Co.



OUR CLIENTS

KSA

الهيئة الملكية لمحافظة العلا
Royal Commission for AlUla



أرامكو السعودية
saudi aramco



نيوم NEOM



المركز الوطني
لتنمية الحياة الفطرية
National Center for Wildlife
المملكة العربية السعودية



وزارة البيئة والمياه والزراعة
Ministry of Environment Water & Agriculture
المملكة العربية السعودية Kingdom of Saudi Arabia

المركز الوطني
لتنمية الغطاء النباتي ومكافحة التصحر
National Center for Vegetation Cover Development & Combating Desertific



السودة للتطوير
Soudah Development

المسار
الرياضي
Sports Boulevard



UAE

دائرة البلديات والنقل
DEPARTMENT OF MUNICIPALITIES
AND TRANSPORT
بلدية مدينة أبوظبي
ABU DHABI CITY MUNICIPALITY



وزارة شؤون الرئاسة
MINISTRY OF PRESIDENTIAL AFFAIRS

دائرة الثقافة والسياحة
DEPARTMENT OF CULTURE
AND TOURISM



هيئة البيئة - أبوظبي
Environment Agency - ABU DHABI

هيئة أبوظبي للزراعة والسلامة الغذائية
ABU DHABI AGRICULTURE AND FOOD
SAFETY AUTHORITY



وزارة البيئة والمياه
MINISTRY OF ENVIRONMENT & WATER

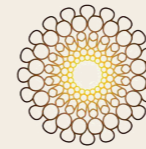


الصندوق الدولي للحفاظ على الحباري
International Fund For Houbara Conservation

Lulu

مطارات أبوظبي
ABU DHABI AIRPORTS

تدوير
Tadweer
مركز أبوظبي لإدارة النفايات
Abu Dhabi Waste Management Center



إكسبو 2020
DUBAI, UNITED ARAB EMIRATES

شركة التطوير والاستثمار السياحي
TDC
Tourism Development &
Investment Company



مساندة
Musanada
شركة أبوظبي للخدمات العامة
Abu Dhabi General Services Company

ALDAR

MUDON

DESERT ISLANDS
RESORT & SPA
BY ANANTARA

KINGDOM'S VISION 2030: AMBITIOUS YET ACHIEVABLE

A global model on the journey towards a sustainable future

- + Sustainability - A Net Zero future by 2060
- + Protection of the environment and biodiversity
- + Sustainable agriculture and conservation efforts,
- + The creation of wildlife sanctuaries
- + Sustainable tourism
- + Safeguard endangered species
- + Preservation of the natural land and seascapes



GREEN GOALS

The Promise of Green Saudi Arabia

278 MTPA

Reduce Carbon Emission

30%

Protect 30% of KSA Land and Sea

10 bn

Plant 10 billion Trees



OUR HOLISTIC APPROACH

OUR HOLISTIC APPROACH



STAGE 1: Advisory



Dr. Ghulam Sarwar PHD
Country Manager



STAGE 2: Design



Mark Ruppert
Architecture and Design



STAGE 3: Construction



Mostafa Fawzi
Construction



STAGE 4: Operations and Maintenance



Fakher Abed
Forest Management and Natural Resources



Stage 1: Advisory

+ Baseline Assessment (Ecological, Environmental, and Social)

- Enlistment of flora and fauna
- Habitat Assessment & Mapping
- Environment Condition
- Biodiversity and Ecosystem Services Assessment
- Remote Sensing and Mapping
- Stakeholder Engagement
- Goal Setting

+ Advisory Programming or Strategy Development

- Wildlife Conservation, Reintroduction and Breeding Strategy
- Wildlife Corridors, Boundaries and Fences requirements
- Restoration/ Afforestation (Polygons) Strategy
- Rangeland Strategy
- Zone Planning Focusing on in-demand Ecotourism services Sustainability and Monitoring Planning



Stage 2: Design

+ Visioning, Masterplan, Pre-Concept and Development

- + **Eco-tourism** strategy and design
- + Adventure and leisure **activities**
- + Trophy/ Game **Hunting** planning
- + Restoration / **Afforestation** planning and design
- + **Wildlife** Conservation
 - Site and Species selection
 - Design and development plan for wildlife
 - Facilities design
 - Wildlife Corridor planning
- + Ecological or **Nature Inspired** design and contextual design
- + Related **Masterplanning, Architectural and Landscape** design
- + **Irrigation** strategy and design
- + Nursery and seedbank development
- + Specifying **Sustainable** products
- + **Feasibility**
- + Advisory **consultation**
- + Technical **Review**



Stage 3: Construction

+ Landscaping & Afforestation

- Hardscape, softscape, water features, and key structures.

+ Irrigation

- Development of efficient irrigation systems and green spaces.
- Conserving water.

+ Sustainable Materials & Infrastructure:

- Eco-friendly construction materials and designs
- Minimize environmental impact.

+ Hunting reserves and resorts

- Implementing Green building concepts
- Eco friendly, nature inspired resorts and reserve construction.

+ Wildlife Habitats and Conservation Areas

- Construction of protected areas for native species and biodiversity.

+ Soil and Erosion Control

- Techniques and structures to prevent soil erosion
- Maintaining healthy ecosystems.

+ Water Resource Management:

- Implementing systems for sustainable water use, including reservoirs and rainwater harvesting.

+ Renewable Energy Integration

- Use of solar or wind energy to power facilities and reduce carbon footprint.

+ Waste Management:

- Proper handling and recycling of construction materials to reduce waste.

Stage 4: Operations and Maintenance

+ Agro-ecological Services (Afforestation and Restoration)

- End-to-end Management, Maintenance, and Operations
- Forest, Farms, and Gardens
- Relocation and rehabilitation of Trees

+ Landscaping Services

- Ornamental and nature-inspired
- Native and Ornamental Plant Nurseries

+ Irrigation and Water Resources

- Smart Irrigation
- Water Wells, Reservoirs, and Supply lines
- Natural Water Harvesting Methods

+ Wildlife Breeding and Conservation

- Ex-situ and in-situ Conservation and Introduction Services.
- Site/Species Selection for Conservation Breeding and Reintroduction.
- Herd and Surplus Animal Management
- Provide/Sell Game Animals Complying with the CITES, IUCN, and all Import-Related Guidelines.

+ Wildlife Management Services

- Holistic Animal Housing and Enclosure Maintenance
- Animal Husbandry, Veterinary Services, Food Supply, and Distribution
- Game capture, Care, Quarantine, and Translocations

+ Sustainability

- Recycle waste, produce organic compost, LNC, AI irrigation
- Research and development
- Renewable, civil, and electromechanical infrastructure
- Sustainable procurement of services, supplies, and consumables



INNOVATION

SMART IRRIGATION - LIQUID NATURAL CLAY - INNOVATION



Barari Innovation Objectives



WATER & COST SAVINGS

50% water and cost saving at a global scale



REDUCING CARBON FOOTPRINT

Efficient water management leading to reduced carbon footprint



IMPROVING YIELD & CROP QUALITY

30% increased yields and improved quality of crops from the first season



REALTIME DATA & CONTROL CENTER

Controlling plots with real time data
User-friendly dashboards and weekly preview charts



REDUCING OPERATIONAL COSTS

Labor, management and consultancy cost saving, leaks prevention, detection and fixing



EXTREME WEATHER PROTECTION

Protecting crops from extreme weather

BARARI USES AI DRIVEN IRRIGATION

UP TO **50%** WATER SAVING 

UP TO **35%** HIGHER YIELDS 

REDUCED LABOR **COST** 



ARTIFICIAL INTELLIGENCE



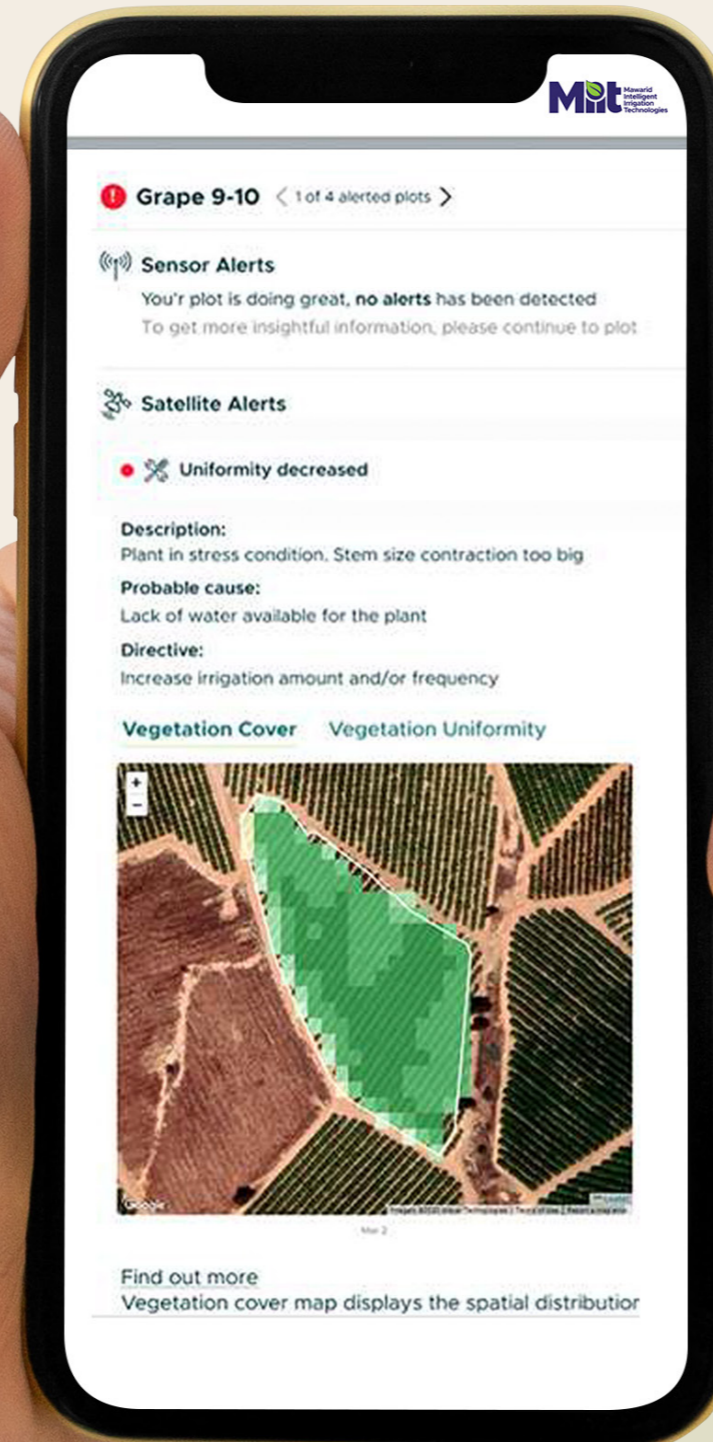
SMART IRRIGATION



CONTROL CENTER



SATELLITE IMAGING



INNOVATION IN THE PALM OF YOUR HANDS

WHAT IS LIQUID NATURAL CLAY ?

Liquid Natural Clay (LNC) is a 100% natural product with no added chemicals that can provide up to 50% water savings. Since the compound is liquid it can be applied using existing water systems without making further investment in new equipment.

REDUCED
LABOUR COST 

UP TO 50% 
WATER SAVING

 **IMPROVED**
SOIL HEALTH & YIELD

CERTIFIED
PRODUCT



RESTORED
BIODIVERSITY

TESTED
PRODUCT



LOWER
CARBON FOOTPRINT

ENDORSED
PRODUCT



INNOVATION - AGTECH




Reuters World Business Markets Sustainability Legal Breakingviews Technology Investigations

Deals

Vertical farming startup Plenty to expand via \$680 mln JV with UAE's Mawarid

By Krystal Hu
July 20, 2024 12:13 AM GMT+4 · Updated 2 months ago



A worker holds seedlings at Plenty indoor vertical farm in South San Francisco, United States January 24, 2022. REUTERS/Carlos Barria/File Photo [Purchase Licensing Rights](#)

July 18 (Reuters) - (This July 18 story has been corrected to clarify that 4.5 million pounds is an annual figure in paragraph 3 and removes reference to 'stacked layers' in paragraph 5)

U.S. vertical farming startup Plenty is forming a joint venture with Mawarid, a subsidiary of Alpha Dhabi Holding ([ALPHADHABI.AD](#)), in a \$680 million deal to develop a network of indoor farms in the Middle East, the companies told Reuters.

Advertisement - Scroll to continue

Bloomberg the Company & Its Products | Bloomberg Terminal Demo Request | Bloomberg Anywhere Remote Login | Bloomberg Customer Support


Bloomberg

Live TV Markets Economics Industries Tech Politics Businessweek Opinion More

Markets

US Startup Plenty, Alpha Dhabi Plan \$680 Million Vertical Farms

- First farm to produce 2 million kg of strawberries annually
- The companies plan to build five more farms in the region



The company's headquarters in San Francisco. Photographer: David Paul Morris/Bloomberg

By [Kateryna Kadabashy](#)
July 18, 2024 at 12:08 PM GMT+4

US farming startup [Plenty Unlimited Inc](#) and a unit of United Arab Emirates's [Alpha Dhabi Holding PJSC](#) are targeting \$680 million of investments over the next five years to develop farms in a region which imports a majority of its food requirements.

Plenty and Alpha Dhabi's unit [Mawarid](#) plan to develop their first indoor farm in the Middle East, Reuters reported.

Have a confidential tip for our reporters? [Get in Touch](#)

Forbes Billionaires Country Insights Featured Money Industry Innovation


The St. Regis Saadiyat Island Resort, Abu Dhabi, U.A.E. • September

Climate Change

Plenty Partners With Mawarid In \$680M JV To Expand Indoor Farming In The Middle East: Report

By [Sana Tahir](#) Forbes Middle East Staff Jul 18, 2024, 12:40 PM

Add to Bookmarks Play Sound



Plenty and Mawarid will make their first collective investment of around \$130 million to develop an indoor farm in Abu Dhabi, Reuters reported.



PORTFOLIO



Project Spotlight:

Telal Resort

A luxurious boutique desert resort set amidst the Arabian oasis on the outskirts of Al Ain city in the vast landscape of Remah Desert which was once home to the nomadic Bedouin tribes of the Emirates.

BNR maintains Telal's indigenous landscape, as well as regional animals that it has previously released on the grounds, caring for them on a daily basis. The animals roam freely throughout Telal, further enhancing the guest experience.

LOCATION

Al Remah Desert, UAE

CLASSIFICATION

5 Star Boutique Desert Resort

AREA

88 KM²

ROLE:

Plant and Wildlife Management

STATUS

Ongoing

PARTNER

Telal Resort



Project Spotlight:

Assessment and Action Plan for Habitat Restoration and Wildlife Reintroduction in Wadi Ashar - KSA

To strengthen the eco-tourism potential as a hotspot this project focused on developing an assessment and action plan for habitat restoration and wildlife reintroduction - commissioned in July 2023 by the Royal Commission for AlUla to Barari International - a subsidiary of Mawarid Holding Investment.

Barari has successfully completed the scientific assessment and submitted the action plan for habitat restoration and wildlife reintroduction in Ashar.

LOCATION

Wadi Ashar, AlUla, Kingdom of Saudi Arabia

CLASSIFICATION

Ecotourism Destination

AREA

29.6 M²

ROLE:

Assessment and Action Plan for Habitat Restoration and Wildlife Introduction

STATUS

Assessment and Action Plan Completed

PARTNER

The Royal Commission fo AlUla



Project Spotlight:

Sir Baniyas Island

Barari Natural Resources (BNR) has been awarded a contract for “Conservation, Management of Wildlife and Botany Services” by Tourism Development and Investment Company (TDIC), Abu Dhabi. As per contract document, BNR team is performing multiple tasks for the conservation and management of flora and fauna of the island.

LOCATION

Sir Baniyas Island, Abu Dhabi, UAE

CLASSIFICATION

Wilderness & Animal Reserve

AREA

87 KM²

ROLE:

Plant and Wildlife Conservation
Operation & Management

STATUS

Ongoing

PARTNER

Tourism Development & Investment
Company (TDIC)



Project Spotlight:

Al Wathba Wildlife Breeding Centre

Barari Natural Resources (BNR) has been awarded a contract for conservation and care of a diverse range of species, with a focus on big cats, hyenas, birds, herbivores, and reptiles. Barari ensures the seamless operation of center, encompassing animal husbandry, veterinary care, enrichment program, breeding loans, biosecurity, and staff well-being.

LOCATION

Al Wathba, Abu Dhabi, UAE

CLASSIFICATION

Wildlife Breeding Center

AREA

13.4 ha

ROLE:

Breeding, Exhibits, Animal Husbandry and Veterinary Care

STATUS

Ongoing

PARTNER

Private Department, Abu Dhabi, UAE



Project Spotlight:

Jebel Hafeet Reserve

As part of our husbandry program, we ensure that the animals have good feed inventory planning, consistent supply of drinking water, and provision of suitable shelter against harsh weather conditions of the desert. Barari also provides the best breeding and intense care for indigenous, as well as exotic wildlife species. Barari also manages and maintains the ecosystem in which the animals live.

Our dedication towards the protection, conservation, management and application of advanced technologies has earned us a reputation for being foremost wildlife managers throughout the region.

LOCATION

Jebel Hafeet, Al Ain, UAE

CLASSIFICATION

Animal Conservation Reserve

TOTAL GROSS FLOOR AREA

5 KM²

ROLE:

Plant And Wildlife Management

STATUS

Ongoing

PARTNER

UAE Government



Project Spotlight:

Al Fay Park

Al Fay is the first of its kind in Abu Dhabi, designed only with vegetation that is native to the region. The design used landscaping and planting to maximize the potential of the site, by creating a micro-climate, that reduces traffic noise and temperature and sustains a forest-like environment. Barari has successfully completed the design and construction of the park in 2021 and has since been undergoing the operation and maintenance of the park to ensure its enduring status.

LOCATION

Reem Island, Abu Dhabi, UAE

CLASSIFICATION

Urban Park Development

AREA

27,500 M²

ROLE:

Design & Construction
Operation & Maintenance

STATUS

Design & Construction Completed
Operation & Maintenance Ongoing

PARTNER

Department of Municipality & Transport
Abu Dhabi City Municipality



Project Spotlight:

Zayed International Airport

Midfield Terminal at Zayed International Airport is the expansion program to facilitate the business and tourism growth in the capital. Barari's scope of work includes Landscape and Hardscape designed to complement the cultural urban fabric of UAE with design supply, installation and integration over 3,000 Lighting Fixtures for Roadways, Landscape and Hardscape areas. The works as well include design and installation of Lighting Control Panels and Remote-Control Management System and Integration with main SCADA control center of Abu Dhabi Municipality. Other elements of the project include over 1,400 tree species, 150,000 sqm softscape works, 190,000 sqm hardscape, Retaining Walls and piling works, Earth Works, Road works and Road furniture, Utilities (storm water networks, Sewage networks, and Telecom Works), and Irrigation Pump Station.

LOCATION

Zayed International Airport, Abu Dhabi, UAE

CLASSIFICATION

Public Landscape

TOTAL GROSS FLOOR AREA

340,000 sqm M²

ROLE:

Design and Construction

STATUS

Completed

PARTNER

Abu Dhabi Airport Company



Project Spotlight:

Masdar City Park

Masdar City Park aims to transform the area into a vibrant community hub catering to diverse needs. It encompasses the development of hardscape and softscape elements, including shade structures, walls, fences, and outdoor furniture, sports and play equipment, outdoor gyms, table tennis, and skidding areas. The project also includes essential amenities such as drinking fountains, toilets, and a cafeteria, as well as infrastructure like electrical and waste rooms, parking, drainage systems, and irrigation facilities, ensuring a well-equipped and inviting space for residents and visitors alike.

LOCATION

Masdar City, Abu Dhabi, UAE

CLASSIFICATION

Urban Park Development

TOTAL GROSS FLOOR AREA

26,000 M²

ROLE:

Design and Construction

STATUS

Completed

PARTNER

Masdar City



CERTIFICATIONS AND HSE

ISO CERTIFICATIONS

CERTIFICATE OF REGISTRATION



Certificate No. 715283

The Quality Management Systems of

BARARI NATURAL RESOURCES L.L.C.

22nd Floor, Nation Towers - Corniche Street (West) - Abu Dhabi, United Arab Emirates, PO 113260

has been audited and found to conform to

ISO 9001:2015

for the following activities

Manage, Operate, Maintain and Develop Identified Forests, Gardens, Landscape, Irrigation System and Infrastructure including Main Roads, Streets, Fences and Related Works Contracting, Afforestation Contracting, Wildlife Protectorate, Agricultural Pest Control, Building Demolition and Other Constructions and Debris Clearing. Facilities Management Services.

Date of Issue: 17 May 2024	Date of Expiry: 09 June 2027	Initial Certification: 10 June 2021
-------------------------------	---------------------------------	--

Guardian Independent Certification Ltd
Registered in England
114 St Martin's Lane Covent Garden London C2N 4BE

Accredited by Member of the IAF MLA
JAS-ANZ registration no. 102102062L, www.jas-anz.org/register



CERTIFICATE OF REGISTRATION



Certificate No. 711333

The Environmental Management Systems of

BARARI NATURAL RESOURCES L.L.C.

22nd Floor, Nation Towers - Corniche Street (West) - Abu Dhabi, United Arab Emirates, PO 113260

has been audited and found to conform to

ISO 14001:2015

for the following activities

Manage, Operate, Maintain and Develop Identified Forests, Gardens, Landscape, Irrigation System and Infrastructure including Main Roads, Streets, Fences and Related Works Contracting, Afforestation Contracting, Wildlife Protectorate, Agricultural Pest Control, Building Demolition and Other Constructions and Debris Clearing. Facilities Management Services.

Date of Issue: 02 April 2024	Date of Expiry: 17 March 2027	Initial Certification: 19 March 2018
---------------------------------	----------------------------------	---

Guardian Independent Certification Ltd
Registered in England
114 St Martin's Lane Covent Garden London C2N 4BE

Accredited by Member of the IAF MLA
JAS-ANZ registration no. E7102061L, www.jas-anz.org/register



CERTIFICATE OF REGISTRATION



Certificate No. 769246

The Occupational Health and Safety Management Systems of

BARARI NATURAL RESOURCES L.L.C.

22nd Floor, Nation Towers - Corniche Street (West) - Abu Dhabi, United Arab Emirates, PO 113260

has been audited and found to conform to

ISO 45001:2018

for the following activities

Manage, Operate, Maintain and Develop Identified Forests, Gardens, Landscape, Irrigation System and Infrastructure including Main Roads, Streets, Fences and Related Works Contracting, Afforestation Contracting, Wildlife Protectorate, Agricultural Pest Control, Building Demolition and Other Constructions and Debris Clearing. Facilities Management Services.

Date of Issue: 18 April 2024	Date of Expiry: 25 February 2027	Initial Certification: 27 February 2018
---------------------------------	-------------------------------------	--

Guardian Independent Certification Ltd
Registered in England
114 St Martin's Lane Covent Garden London C2N 4BE

Accredited by Member of the IAF MLA
JAS-ANZ registration no. C1006006L, www.jas-anz.org/register





BARARI HSE

BARARI considers environmental protection, occupational health and safety at work as important as providing quality services and have a department responsible for these issues.

HSE management has two general objectives:

1. Prevention of incidents or accidents that might result from abnormal operating conditions.
2. Reduction of adverse effects that result from normal operating conditions.

As we continue to strive for a zero incident performance, the following principles provide the framework for how we conduct our day-to-day running:

- Management commitment
- Integrate health and safety processes
- Clearly communicated roles and responsibilities
- Active employee participation
- Allocation of sufficient resources
- Appropriate training

These measures are constantly evaluated to help improve them and eliminate the risk of incidents in the future.



OUR COMMITMENT



To provide **quality advice** and help you realise your **vision**.



Apply our decades of **knowledge** and **experience** to deliver the project on time.



Deliver a **thriving** and **sustainable** ecosystem.



**ENVIRONMENTAL
STEWARDSHIP AND
AGRO-ECOLOGY
MORE DETAIL**



AFFORESTATION

Afforestation in arid regions supports environmental sustainability and community well-being by combating desertification, improving soil and water management, and creating microclimates. Trees absorb carbon dioxide, enhance biodiversity, improve air quality, and offer recreational and aesthetic benefits, supporting both local communities and wildlife.

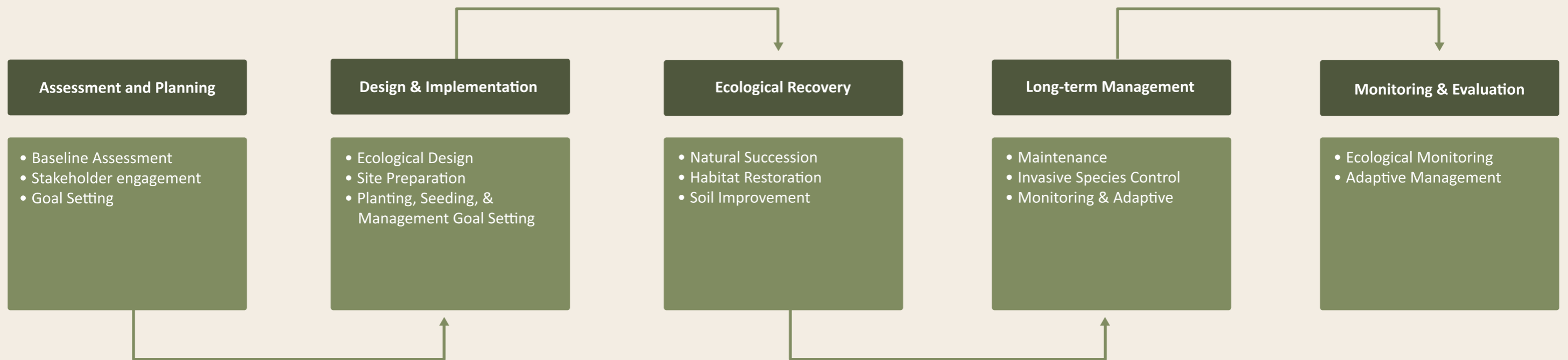
Barari Natural Resources provides comprehensive afforestation solutions for arid environments, from site assessments to long-term maintenance, ensuring sustainable outcomes.

Key Services:

- 1. Turnkey Project Management:** End-to-end management, from planning to maintenance, focusing on sustainability and native species.
- 2. Ecological Studies and Site Assessments:** Evaluates optimal locations based on soil, climate, and environmental factors.
- 3. Logistical and Infrastructural Development:** Builds infrastructure like access roads, electrical, and irrigation systems, with off-grid solutions for remote sites.
- 4. Water Management:** Designs efficient irrigation systems, including AI-driven technologies, and installs wells and pipelines for water delivery.
- 5. Plant Propagation and Planting:** Specializes in native species propagation using techniques for high survival rates and ecosystem support.
- 6. Site Protection and Security:** Provides fencing and security to protect afforestation sites from unauthorized access and wildlife.

With decades of experience, Barari is committed to delivering sustainable, high-quality afforestation projects in arid regions.

HABITAT RESTORATION APPROACH



(GPFLR, WRI, South Dakota State University and IUCN, 2011)

(SER-RRC accessed on March 11, 2024)





LANDSCAPE APPROACH

- + Prefeasibility & Assessments
- + Feasibility, Design Principles, and Action Plan
- + Nature-Inspired Landscape Development
 - Natural Integration
 - Natural Flow and Contours
 - Harmonious Proportions and Scale
 - Ecological Planting
 - Balancing Enclosure and Openness
 - Sustainable Landscaping
 - Soil Health Enhancement
 - Sustainable Nursery Practices
 - Incorporating Traditional Knowledge
 - Native Plant Usage
 - Balance of Hard and Soft Elements
 - Adherence to Local Standards

NATURALISTIC LANDSCAPING

Banayan Tree Wadi Ashar, AlUla, Kingdom of Saudia Arabia



URBAN LANDSCAPING





NATIVE PLANT NURSERIES

Water use has increased dramatically over the last five years and the main reasons are population growth, economic development, and a change in the lifestyle of its citizens. These factors have also led to an increase in water demand for irrigation. Hence, governments are working towards increasing water use efficiency in their parks, gardens, recreational areas, and along roads.

To achieve this, more efficient water-use plants will be required. Barari has produced native plants and trees for decades and made them available to the market by following the guidelines set for native plants.

The advantages of using native plants are:

- + Conserve water
- + Tolerate high salinity
- + Tolerate high temperatures
- + Resistant to diseases



ORNAMENTAL NURSERIES

Barari Nurseries' is one of the largest growers and importers of all kinds of ornamental plants with almost all types of palms, trees, shrubs, ground covers, and fruit plants in its portfolio. There are two commercial ornamental plant nurseries located at Al Fuah and Al Kuwaitat plants at Al Salamat.

- + Equipped with the latest machinery
- + Devoted and specialist staff
- + Continuous research and development
- + Immense knowledge of the regional fauna
- + Low cost, optimized quality & bulks

Barari Nurseries could meet the demands of retail, and wholesale, along with landscape contractors and government clients throughout the GCC.



RELOCATION AND REMOVAL OF TREES

Barari has perfected the technique of acclimatizing mature plants in its forests, then removing and relocating them to other areas.

- + State of the Art Infrastructure
- + Equipped with the latest machinery
- + Trained and Specialized Staff
- + Optimized and Species-specific SOPs
- + Multi-species specialties
- + Knowledge and Experience of Decades
- + Management
- + Maintenance





WATER RESOURCES RESEARCH AND IRRIGATION METHODS

Barari has access to the latest innovations in irrigation technology, ensuring that our clients receive the most suitable system for their requirements, all the while abiding by the most efficient methods for water conservation. Our expertise has contributed to irrigation systems in various substantial projects, and draws upon incorporating all components of a reliable irrigation network, including automated controllers, piping, valves and orifices. At Barari, we take charge of the complete irrigation process, with a specific focus on the design and execution phases.

- + Remote Sensing and GIS based Survey
- + NDWI (Normalized Differential Water Index)
- + Water Shed Analysis
- + Nature Based Water Harvesting Techniques:
 - Half-moon Circles for rainwater harvesting
 - Suwales and contour techniques
 - Saucir Basin/ semi circular bunds
 - Micro-catchment systems
 - Ponds and Channels
 - Dispersion, Diversion and Detention structures
 - Storage Dams
- + Sub-Surface Irrigation:
 - Drip Irrigation
 - Groassis Waterboxx
 - Sprinkler Irrigation





IRRIGATION SYSTEM WORKS

Barari Natural Resources provides a full range of irrigation services, including the design, installation, and maintenance of comprehensive water management systems. Leveraging the latest technologies and innovative solutions, Barari ensures efficient water use and sustainable irrigation practices tailored to the unique needs of each project. From drilling wells and installing advanced irrigation infrastructure to offering preventative maintenance and real-time monitoring solutions, Barari supports clients in achieving optimal water conservation and infrastructure performance across diverse landscapes.

- + Project Management and Consultation
- + Water Management and Conservation Strategies
- + Irrigation System Design and Planning
- + Installation and Execution
 - Drilling wells
 - Installation of casings
 - Installation of pumps and filters
 - Installation of well heads
 - Installation of electrical distribution and automation panels
 - Installation of water storage units
 - Installation of booster pumps, screens, and filters
 - Installation of main lines, sub-mains, and valves
 - Automation of irrigation process
- + Maintenance and Optimization
 - Scheduled preventative maintenance programs
 - Maintenance of all physical infrastructure components
 - Early failure warnings when integrated with GIS and GSM technologies
- + Infrastructure Development and Support



IRRIGATION SYSTEM WORKS

Barari has access to the latest innovations in irrigation technology, ensuring our clients receive the most suitable system as per requirements, all the while abiding by the most efficient methods for water conservation.

Our Expertise:

- + One-stop shop for the complete irrigation process and Solution
- + Irrigation systems design
- + Installation
- + Operation and maintenance
- + Smart, efficient, and tech. driven
- + Reliable irrigation network, including automated controllers, piping, valves and orifices.





FEED PRODUCTION

Al Ain Fodder Factory (AAFF) was established in 2002 in Al Ain city with an additional production plant been introduced in 2009. It is a fully automated, state-of-the-art plant to produce and supply various types of high-quality animal feed. It has built a proud legacy of quality and its customers include government entities, zoos, farms, and private enterprises.

AAFF has established its name for Quality and possess unique ability to cater to a broad range of clientele with highly specialized feeds. This include Poultry (Broilers & Layers), Goat & Sheep; Dairy Cows & Calves, Camels (Racing Camel, Brood Camel, Camel Calf); Game Birds like Partridge, Quail, Duck and Zoo animals like Deer & Gazelle, Arabian Tahr, Browser, Llama, Crane, Ostrich, Flamingo, Houbara, Pigeon, Rat, Rodents, and Rabbits. All feeds are scientifically formulated to meet the specific requirements of customers.

Al Ain Fodder Factory (AAFF) production facility is able to manufacture the following products texture: Mash, Crumble with minimal powder %, Pellets from 2mm to 14mm, Camel Coarse Mix (Muesli Feed), Grain Mix, Flaked Barley and Flaked Corn.

Its operations are certified to ISO 9001:2015 for Quality Management, ISO 14001:2015 for Environmental Management, ISO 45001:2018 for Occupational Health and Safety Management System, and ISO 22000:2018 for Food Safety Management.

COMPOST

Abu Dhabi Compost Plant (ADCP), operated by our subsidiary, Barari Natural Resources in collaboration with Tadweer, manages the conversion across three large facilities in the UAE and handles both plants and animals waste.

Abu Dhabi Compost Plant started its activities in 1977 and it's now well positioned to play a major role in the agricultural industry. The plant is committed to work towards sustainability and the balanced development of the agricultural sector, which is considered as a cornerstone of Abu Dhabi's 2030 strategic plan. The factory contributes to the production of organic fertilizers by applying international best practices to protect the UAE's valuable environment by adopting the best waste management solutions especially for plant and animal waste. Abu Dhabi compost plant is also committed to promote and raise community awareness about the importance of waste recycling.





5 STAR BOUTIQUE DESERT RESORT

Telal Resort is a luxury boutique desert resort set amidst a pristine oasis on the outskirts of Al Ain city in the vast landscape of Remah Desert, which was once home to the nomadic Bedouin tribes of the Emirates.

ECO TOURISM RESORTS

Mawarid Hotels and Hospitality is a destination management company specialising in boutique properties with an environmental-focused approach.

At Mawarid Hotels and Hospitality (MHH), we are a team of owners, developers, operators, and managers, but first and foremost, we are a team of visionaries.

Through a combination of our internal resources and innovative management style, we are able to deliver and operate unique leisure developments and maximise the value of our developments. Mawarid Hotels and Hospitality is committed to providing expert services for our clients as we do in our own self-managed properties, with a dedication to facilitating interaction with true nature.

Mawarid Hotels and Hospitality is a proud subsidiary of Mawarid Holding Investment (MHI).





DESIGN

Mawarid International Development Company (MIDC) is the strategic development arm of Mawarid Holding Investment. We offer a truly holistic development service for our internal portfolio and select partners .

As a visioning and design team, we offer a turn-key solution through a delivery process that utilises MHI subsidiaries integration models to maximise project potential. In short, we incubate ideas and transform them into a reality.

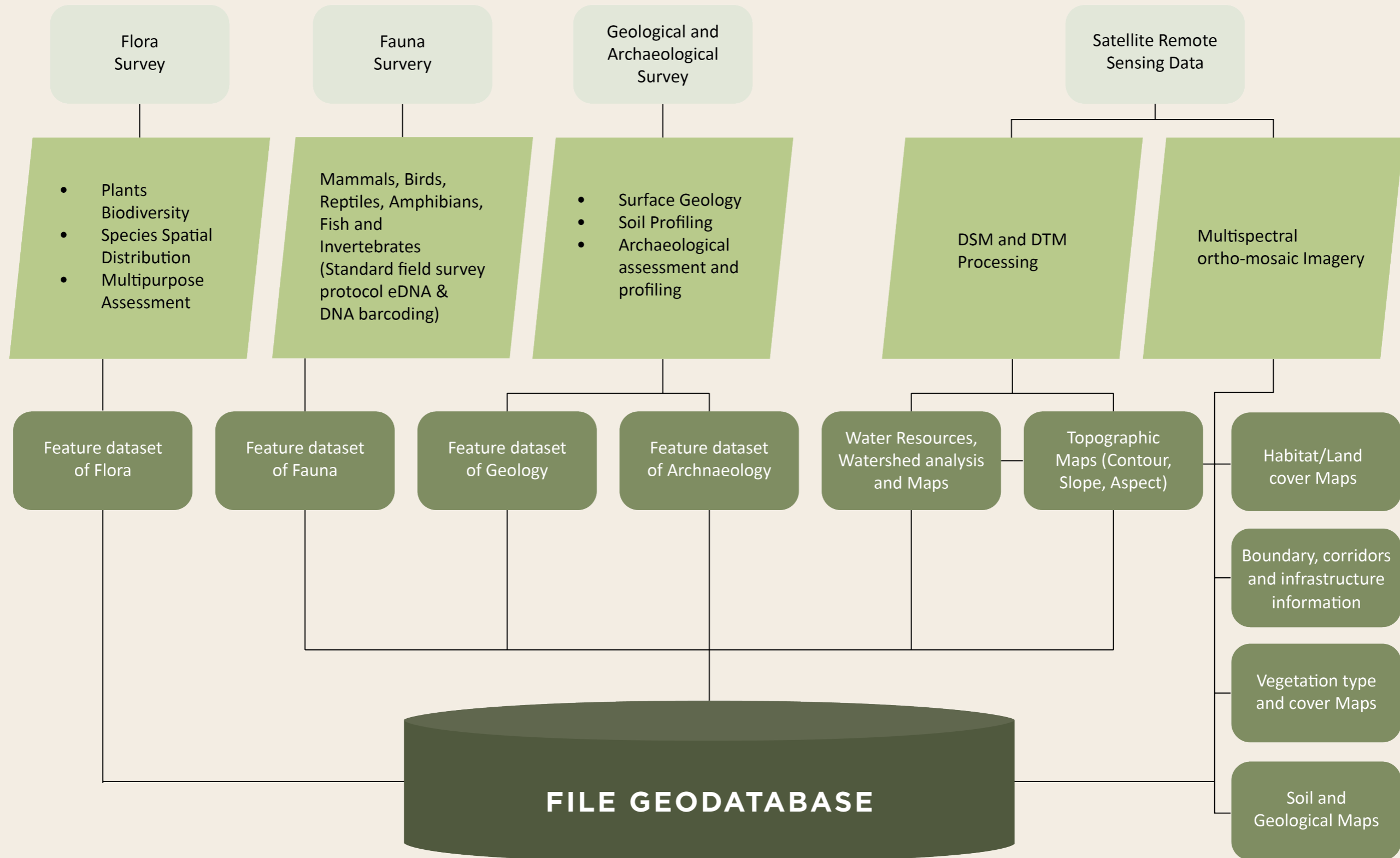
Our overarching mission is to create truly unique experiences that celebrate and enhance ecosystems.

MIDC



WILDLIFE MANAGEMENT MORE DETAIL

ECOLOGICAL ASSESSMENT AND APPROACH



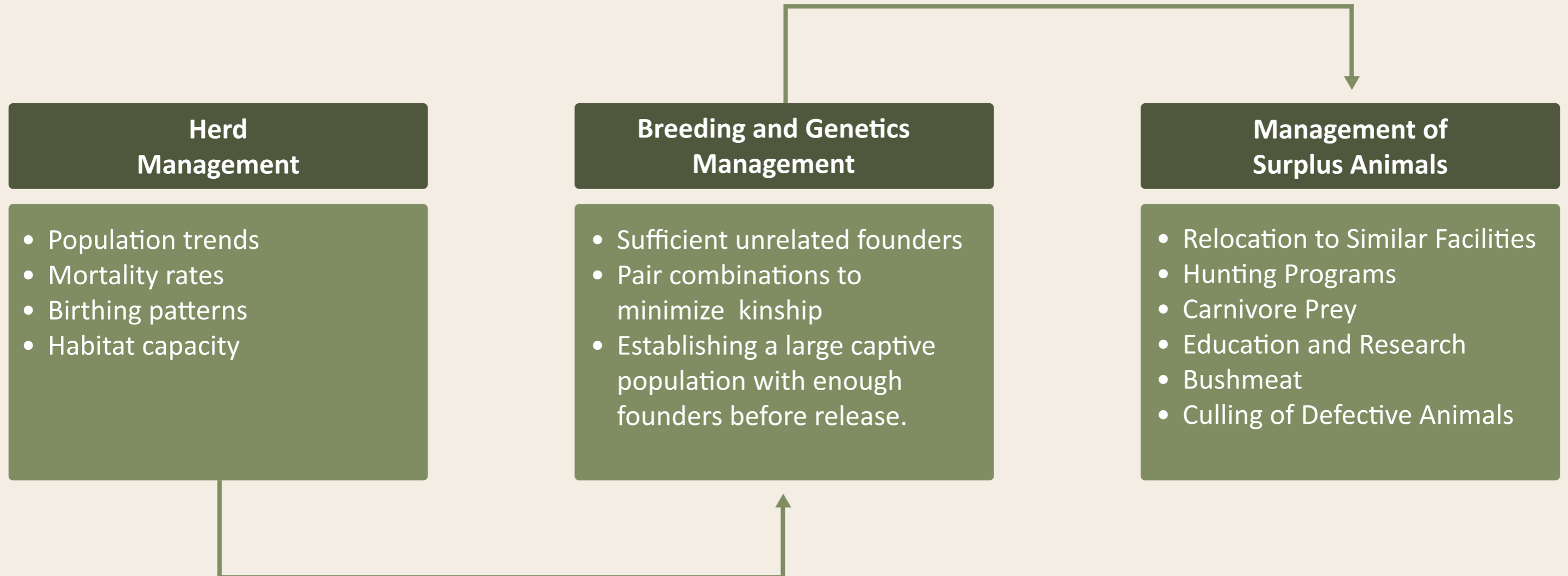
WILDLIFE BREEDING AND REINTRODUCTION APPROACH

Our Approach

- + Ecological Studies & Assessments
- + Carrying Capacity of Reserves and Release sites
- + Site Selection Multifactor Matrix
- + Species Selection
- + Habitat Management
- + Enclosure Design
- + Provision of Animal Husbandry Services
- + Provision of Veterinary Services
- + Capture, Care, Quarantine and Translocation
- + Population Management & Control
- + Herd Management
- + Surplus Animals Management



WILDLIFE BREEDING AND REINTRODUCTION APPROACH



WILDLIFE BREEDING AND REINTRODUCTION

SITE/ Species ANALYSIS PARAMETERS			RELEASE SITE A	RELEASE SITE B	RELEASE SITE C
Physical Conditions	Size	Available Area			
		Options to expand			
	Infrastructure	Options to expand			
		Resorts/Master Villas Plan			
		Roads			
		Utilities Network			
		Fences			
	Agriculture and Livestock Activities	Livestock			
		Agriculture			
		Domestic/ Feral			
		Pesticides Effect			
	Human Interference	Tourism			
		Security			
		Illegal Hunting/ Poaching			
	Pollution	Off-roading			
		Soil Littering			
		Sound Pollution			
		Air Pollution			
Natural Resources	Topography	Variation in Altitude			
		Variation in Slope/ Aspect			
	Water	Availability			
		Rainwater Streams			
Natural Browse	Plant Diversity				
	Poisonous Plant				
	Seasonal Variation				
	Competition				
	Pasture Proximity				
Shelter/Cover	Occupying Capacity				
	Rock				
	Veg. Cover				
	Gorge/Runnel				
Ecological Aspects	Habitat	Dune Cover			
		Natural Habitat			
	Boundary Info's	Altered Habitat			
		Human Settlements			
Managerial Concerns	Access to site	Corridor Connection			
		Direct Access			
	Stakeholders Consent	Indirect Access			
Stakeholder 1					
Stakeholder 2					
Potential RATING		Stakeholder 3			
		High			
		Moderate			
		Low			
		Null/Zero			

WILDLIFE BREEDING AND REINTRODUCTION

Parameters	<i>Gazella marica</i>	<i>Gazella Arabica</i>	<i>Oryx Leucoryx</i>	<i>Capra Nubiana</i>
Native to KSA	Highly Suitable	Highly Suitable	Highly Suitable	Highly Suitable
Area Feasibility	Highly Suitable	Moderately Suitable	Low Suitable	Not-Suitable
Natural Habitat	Highly Suitable	Moderately Suitable	Low Suitable	Low Suitable
Natural Browse	Highly Suitable	Moderately Suitable	Low Suitable	Not-Suitable
Breeding Ground	Highly Suitable	Moderately Suitable	Low Suitable	Low Suitable
Water Availability	Low Suitable	Low Suitable	Low Suitable	Low Suitable
Topography	Highly Suitable	Moderately Suitable	Low Suitable	Not-Suitable
Shelter/Cover	Highly Suitable	Highly Suitable	Low Suitable	Not-Suitable
Human Friendly	Highly Suitable	Moderately Suitable	Not-Suitable	Not-Suitable
Client Consent	Highly Suitable	Moderately Suitable	Not-Suitable	Not-Suitable
Habitas Consent	Highly Suitable	Moderately Suitable	Not-Suitable	Not-Suitable
DMMO's Consent	Highly Suitable	Moderately Suitable	Moderately Suitable	Not-Suitable
Maraya Consent	Highly Suitable	Moderately Suitable	Not-Suitable	Not-Suitable
SPSF Consent	Highly Suitable	Highly Suitable	Moderately Suitable	Not-Suitable
Suitability Potential				
Highly Suitable	Highly Suitable			
Moderately Suitable	Moderately Suitable			
Low Suitable	Low Suitable			
Not-Suitable	Not-Suitable			



ENCLOSURE DESIGN AND ANIMAL HOUSING

Abiding by international standards, our team designs develops, manages, and operates suitable wildlife enclosures and animals' houses using the highest quality material for longevity. Catering to private and government entities, we provide state-of-the-art services complying with EAZA, IUCN, and NCWCD guidelines.

- + Species-specific enclosure design
- + Species-specific furnishing
- + Species-specific enrichment structure
- + Species-specific husbandry, care & capture
- + Species-specific release protocols
- + Species-specific Introduction protocols



CONVENTIONAL FENCING AND GAME FENCING

Abiding by international standards, our team executes a range of fencing work to the liking of our clients using the highest quality of core wire for longevity. Catering to private and government entities, we provide chain link fencing around gardens, farm houses, highways, petrol, gas companies and more.

- + Species-specific
- + Cost effective
- + Quality Compliant
- + Reinforced
- + International and Local Standard Compliant
- + Retrofit





ANIMAL HUSBANDRY

Barari can provide a comprehensive range of animal husbandry services by following species-specific guidelines set by various international conservation organizations i.e., EAZA and WAZA minimum husbandry guidelines.

- + Feeding and foraging opportunities based on species-specific nutritional requirements, digestive physiologies, natural feeding behaviors, and appropriate food sources.
- + Concentrates (Pellets): Commercially available herbivore pellets providing proteins, energy, vitamins, and minerals.
- + Roughages (Hay): A binary combination of Alfa Alfa and grass, serving as a source of fibers.
- + Concentrate to roughages ratio: Should not exceed 1:3
- + Jet to Rhodes/Bluegrass ratios: Should not exceed 1:2 to activate fermentation microbes inside the animal's digestive system.
- + Daily food regime: Concentrate and Roughages (Hay) based on weight-specific ratios
- + Day-to-day care by following species-specific protocols
- + Mimic to ensure the condition of the reserve nearest possible to the natural habitat
- + 24/7 Availability of enough water in wildlife enclosures
- + Maintaining optimal cleaning conditions of the feeding areas and water trough.
- + Species-specific release protocols
- + Species-specific Introduction protocols



VETERINARY CARE

Barari leverages the continuous availability of a professional veterinary team to provide the best possible wildlife health and disease management services encompassing

- + Routine health checks and monitoring of the wildlife enclosures and sites
- + Emergency preparedness, response, and rescue services
- + Laboratory testing and diagnosis services
- + Annual Vaccination
- + Annual representative stock sampling
- + Biosecurity
- + Postmortem and disposal of dead animals



GAME CAPTURE

Barari game capture, care, and translocation team bring decades of experience in game capture utilizing state-of-the-art equipment and facilities. Barari can offer massive, active, and passive capture through booma, netting, corals and funnels, drop nets, and clover traps. Team Barari is one of the founding entities to use chemical immobilization for wild animal capture in forests and reserves under their management. In a nutshell Barari can offer.

- + Species-specific capture protocols
- + Species-specific design and execution capture operations
- + Stress management Strategies
- + Species-specific translocation and transportation
- + Air and land movement of animals under the supervision of professionals
- + Species-specific Capture, Care, translocation, release plan
- + Complete adherence to HSE standards ensuring the safety of the animals and handlers



WILD LIFE AND ENDANGERED SPECIES

With a focus on conservation, Barari currently manages over 65,000 ungulates (individuals) and 50,000 wild birds, many of which are threatened species including 59 carnivores (Cheetah, Hyenas, Caracal, Golden Jackal, and wild (sand) cats). Barari specializes in venturing into the successful breeding of many endangered species in the GCC region.

- + Arabian tahr (*Arabitragus jayakari*)
- + Arabian oryx (*Oryx leucoryx*)
- + Arabian sand gazelles (*Gazella arabica*)
- + Nubian ibex (*Capra nubiana*)
- + Mountain gazelles (*Gazella marica*)
- + Houbara bustard (*Chlamydotis undulata*)
- + Arabian partridge (*Alectoris melanocephala*)
- + Spiny-tailed lizard (*Uromastyx aegyptia*)
- + Scimitar-horned oryx (*Oryx dammah*)
- + Rehabilitation and release of endangered sea turtles
- + Scientific assessment of the genetic diversity of the sand gazelle population in the forests of Abu Dhabi Emirate.

EQUIPMENT AND FLEET



Thank you

Barari

Al Hadeel Center 2nd-floor office no 6, Al Yasmeen District

King Abdelaziz Road Riyadh - Saudi Arabia

P.O. Box 99782

info@barariksa.com

Contact



Dr Ghulam Sarwar PhD, Country Manager

T: +966 11 241 3307

M: +966 50 1968274

ghulam.sarwar@barariksa.com



Engr Fakher Abid, Head - Forest Management and Natural Resources

T: +966 11 241 3307

M: +971 2 3015201

fakher.abed@barari.ae

